



RANGER BUDDIES GET READY FOR ZOOLYMPIX

POST-SHOW RESOURCE

THANK YOU FOR WATCHING



We hope your students had a lot of fun learning about animals and their amazing abilities while preparing for the Zoolympix with Ranger Hosts Kiara and Lorraine!

The classroom activity in this teaching resource was designed to reinforce the knowledge learnt in the Virtual Show and encourage critical thinking skills.

CREATE YOUR UNIQUE ANIMAL



Use the following pages to facilitate an activity for students to design an animal with a unique combination of abilities! Submit your class's animal design and stand a chance to be featured in our next Virtual Show.

Research

Recap the animal abilities learnt in the Virtual Show* and do research on the adaptations, habitats and diets of other animals that your students are interested in.

*Refer to pages 6 - 9 for information on the animals in the virtual show.



Click here to explore and learn more about other animals found at [Bird Paradise](#), [Night Safari](#), [River Wonders](#) & [Singapore Zoo](#).

CREATE YOUR UNIQUE ANIMAL



Brainstorm

You may want to use the questions below help you facilitate a class brainstorm to create a unique animal. Encourage your students to reference the animals they have researched for their creation.

Suggested sequence of questions to consider:

1. Where does this animal live?
2. What food does it eat?
3. How does this animal move?
4. How does it find its food?
5. What other special abilities does the animal have to survive in its environment?
6. What body parts will the animal need to do all the above?



It has wings like an eagle to fly high and reach fruits at the top of a tree!

CREATE YOUR UNIQUE ANIMAL



Share your class's unique animal to stand a chance to be featured in our next Ranger Buddies Virtual Show!

Click [here](#) to upload an image of your class's animal design(s) with the following details:

- Up to three sentences to describe the animal
- Class name and school



SEE YOU AT OUR NEXT SHOW!



ASIAN ELEPHANT



RAINFOREST



DIET



TRUNK

The Asian elephant lives in the rainforest, where it eats food like grass, leaves, and fruits.

Occasionally, elephants knock over trees to clear their paths and use their trunks to pull them out of the way.

They may also do this to help them reach the tasty leaves and fruits in the treetops!

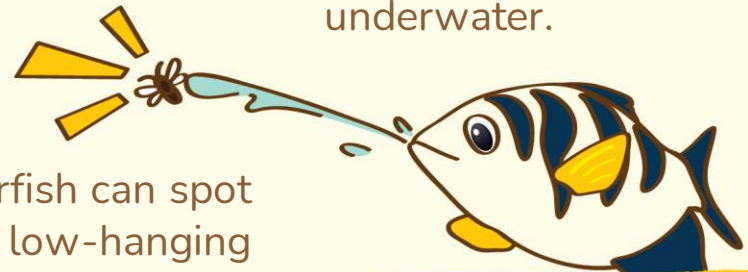


BANDED ARCHERFISH

The banded archerfish lives in mangroves and eats smaller animals both underwater and above the water!



It likes to eat insects like crickets. It may also eat smaller fish or worms underwater.



The archerfish can spot insects on low-hanging tree branches. It spits a jet of water to knock them into the water to eat them.



OTTER



The otter lives near rivers where it hunts for fish. Fish are fast swimmers, so otters have to be quicker to catch them!



**WEBBED FEET
+
STRONG TAIL**

It uses its webbed feet and strong tail to swim and change directions easily under water.

Its whiskers help them sense the fishes' movements underwater.



CHEETAH



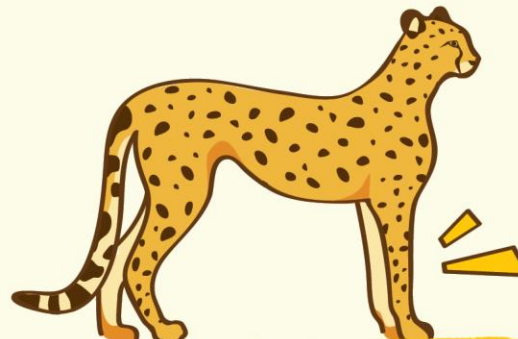
OPEN GRASSLAND

The cheetah lives in the open grassland where it hunts for prey animals such as antelopes and hares.

The claws on its feet help it sprint and change directions quickly by gripping the ground as it runs.



CLAWS



FEET AND LONG LEGS

A cheetah's long legs help it run faster than a car on the highway! In a chase, it can catch its prey in only a few seconds!